

SLECTRO
ROW SHUTOFF
PARTS DIAGRAM

**ROW SHUTOFF
for
CASE/IH CYCLO
PLANTERS**

SLECTRO COMPANY

309 SPRUCE ST

AVON, SD 57315

(605) 286-3221

Row Shut-Off For CASE/IH Cyclo Planters



"I contour farm terraces. The row shut-off allows me to stop planting the rows as I enter point rows. It works wonders by saving seed and preventing overpopulation of crop. I've had no problems with the attachment - how can something so simple work so slick?"

Kenneth Hoppner
Washta, Iowa

The unit consists of a secondary set of release wheels, switchbox (12 volt DC), and wire harness. The secondary release wheels (shut off wheels) are applied by solenoids controlled by the switchbox. The shut off wheels release the seed from the seed drum seed holes before the seed reaches the row manifold. Electrical power is used only when rows are shut off.

The unit is field tested, prevents seed loss and, easy to install.

The SLECTR row shut off fits CYCLO AIR planters up to 24 rows with options to stop 2, 3, 4, 6, or 8 rows per switch.



U.S. PATENTED

"The Slectro shut-off is a device I had been looking for. In my no-till operation, I can plant without overlapping point rows. I can also plant turn rows in the middle of the field without double planting. It's a simple device and works great."

Harmon Monk
Ashkurn, Illinois

For more information contact:

SLECTRO COMPANY

P.O. BOX 226 • AVON, SOUTH DAKOTA 57315

(605) 286-3221

1-800-355-3221

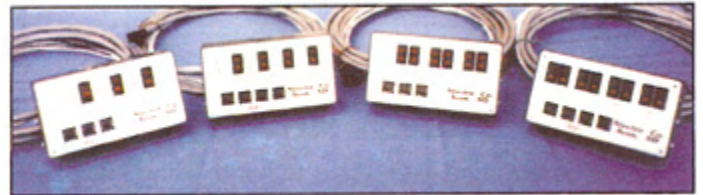
Row Shut-Off For CASE/IH Cyclo Planters



"I contour farm terraces. The row shut-off allows me to stop planting the rows as I enter point rows. It works wonders by saving seed and preventing overpopulation of crop. I've had no problems with the attachment - how can something so simple work so slick?"

Kenneth Hoppner
Washta, Iowa

The switchbox (12 volt DC), consists of illuminating rocker switches. Light in switch indicates when rows are shut off. Circuit breakers protect the solenoids which apply secondary release wheels.



**For Case/IH 800, 900, and 950 Series
(400 and 500 Series – Special Order)**



- field tested
- consists of a secondary set of seed release wheels which drop seed out of drum before reaching the seed tube manifold
- does not affect operation of planter and only applied while rows are shut-off
- **prevents seed loss and overpopulation**
- easy to install (drill two holes)
- cab remote control
- shut off as many rows as necessary, 2 rows at a time (some models will adapt to stopping 4 rows at a time)

U.S. PATENTED

"The Electro shut-off is a device I had been looking for. In my no-till operation, I can plant without overlapping point rows. I can also plant turn rows in the middle of the field without double planting. It's a simple device and works great."

Harmon Monk
Ashkurn, Illinois

For more information contact:

SLECTRO COMPANY

P.O. BOX 226 • AVON, SOUTH DAKOTA 57315

(605) 286-3221

1-800-355-3221

SLECTRO

ROW SHUT OFF

Price List 01/01/09 – 06/30/09
prices subject to change without notice

Unit #	Planter Row Width	No. of rows per switch	Price
SC 101	4	2	\$640.00
SC 102	6	2	780.00
SC 103	6	3	715.00
SC 104	8	2	920.00
SC 105	8	4	720.00
.....			
SC 106	12	2	1480.00
SC 107	12	3	1230.00
SC 108	12	6	945.00
SC 109	16	2	1775.00
SC 110	16	4	1230.00
SC 111	16	8	945.00
.....			
SC 112	24	4	1850.00
SC 113	24	8	1340.00

Quotes in us Dollars

Note: Shipping not included in price.
Additional charge for extended harness

SLECTRO COMPANY

309 Spruce St. • PO Box 226 • (605)286-3221
Avon, SD 57315

Row Shutoff Parts List
 Prices subject to change
 January 01, 2009

US Dollars - Shipping not included

<u>Part No.</u>	<u>Description</u>	<u>Price</u>
S94202	Front Mount Bracket	\$27.00
S94203	Back Mount Bracket	\$27.00
S94501	Solenoid Carriage	\$72.00
S94702	Solenoid Carriage	\$72.00
S94007	Solenoid Cover	\$38.00
S99201	Solenoid Cover	\$26.00
S94004	Wheel Cover	\$19.00
S94011	Gang Pivot Pin	\$6.50
HWC555	Grip Ring	\$0.80
S151234	Spacer	\$7.50
F37814H	Wheel	\$10.50
37814H	Wheel	\$10.50
37814N	Wheel Assembly	\$10.50
S94202	Wheel Carrier Axle	\$10.80
S94207	Wheel Carrier Axle	\$11.20
S151458	Wheel Carrier Hub	\$3.60
S94106	Wheel Carrier Tube	\$6.80
S94107	Wheel Carrier Tube	\$7.20
S94301	Wheel Lever Fork	\$28.00
S94301	Wheel Lever Fork	\$30.00
S94204	Wheel Lever Gang	\$24.00
D610-B1V12	Solenoid	\$98.00
770-2110	Coil Spring (cone)	\$3.80
T10581	Lock Nut	\$2.10
S94309	Single Jumper	\$3.60
S94509	Double Jumper	\$3.90
S94012	Mounting Bracket	\$5.90
S813020	Fuse 20 Amp	\$12.60
S35-660	Switch (illuminating)	\$11.20
W28XQ1A-10	Switch Fuse (10 Amp)	\$12.20
W28XQ1A-15	Switch Fuse (15 Amp)	\$12.20
P306CCT	Plug	\$12.70
S306CCT	Socket	\$12.70
S10 - 2C	Power Cord	\$28.00
S13 - 3C	Lead Wire (13ft)	\$38.00
S20 - 3C	Lead Wire (20ft)	\$44.00
S13 - 5C	Lead Wire (13ft)	\$58.00
S20 - 5C	Lead Wire (20ft)	\$69.00

Prices and other references subject to change without notice

Parts List continued

Prices and other references subject to change without notice

<u>Part No.</u>	<u>Discription</u>	<u>Price</u>
Planter Wire Harness		
SH10-3C	Single 3 Conductor-10ft	\$40.00
SH20-3C	Single 3 Condo – 20ft	\$50.00
SH10 – 5C	Single 5 Condo – 10ft	\$50.00
SH20 – 5C	Single 5 Condo – 20ft	\$62.00
SH30 – 5C	Single 5 Condo – 30ft	\$80.00
DH10 – 2C	Double 2 Condo – 10ft	\$60.00
DH30 – 2C	Double 2 Condo – 30ft	\$90.00
DH10 – 3C	Double 3 Condo – 10ft	\$75.00
DH30 – 3C	Double 3 Cond. – 30ft	\$125.00
TH36 – 2C	Triple 2 Condo – 36ft	\$140.00
TH46 – 2C	Triple 2 Condo – 46ft	\$170.00
Unit Switch box (13ft lead)		
2204 – S3	2 Switch Control Box	\$310.00
3306 – S5	3 Switch (box)	\$340.00
4408 – S5	4 Switch (box)	\$360.00
6312 – D5	6 Switch (box)	\$410.00
8416 – D5	8 Switch (box)	\$440.00
Planter Units		
436 – PR	Wheel – Solenoid Assembly	\$660.00
448 – P8R	Wheel – Solenoid Assembly	\$770.00
428 – F8R	Wheel – Solenoid Assembly	\$540.00
218 – F8R	Wheel – Solenoid Assembly	\$410.00
Wheel Lever Fork Assembly		
S4301 – 4W	Fork Level Unit (4 wheels)	\$75.00
S3401 – 3W	Fork Level Unit (3 wheels)	\$75.00
S8701 – 8W	Fork Level Unit (8 wheels)	\$112.50
S6901 – 6W	Fork Level Unit (6 wheels)	\$112.50

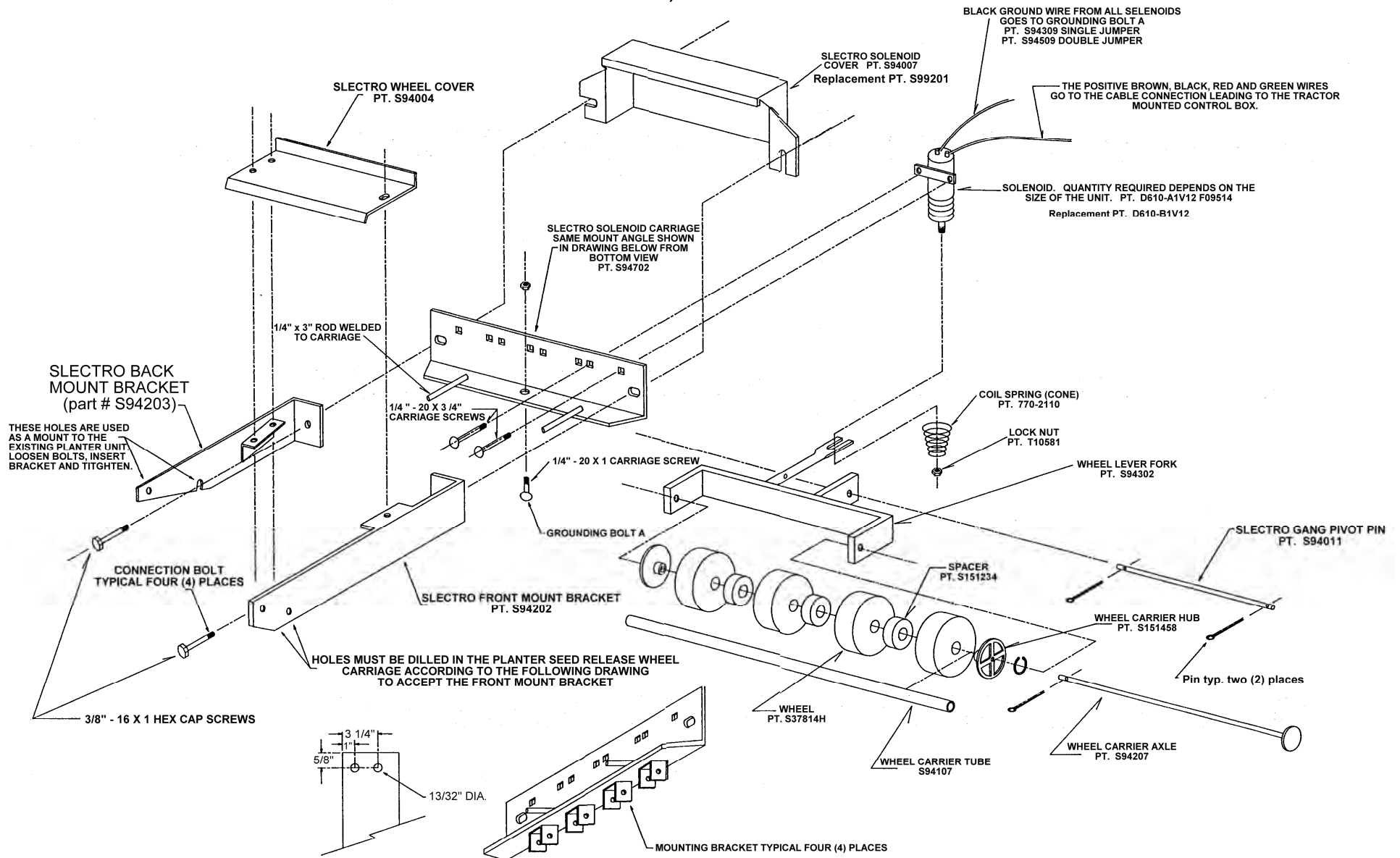
US Dollars

Shipping not included

Prices and other references subject to change without notice

ROW SHUT OFF CARRIAGE UNIT

MODEL; 218-F8R

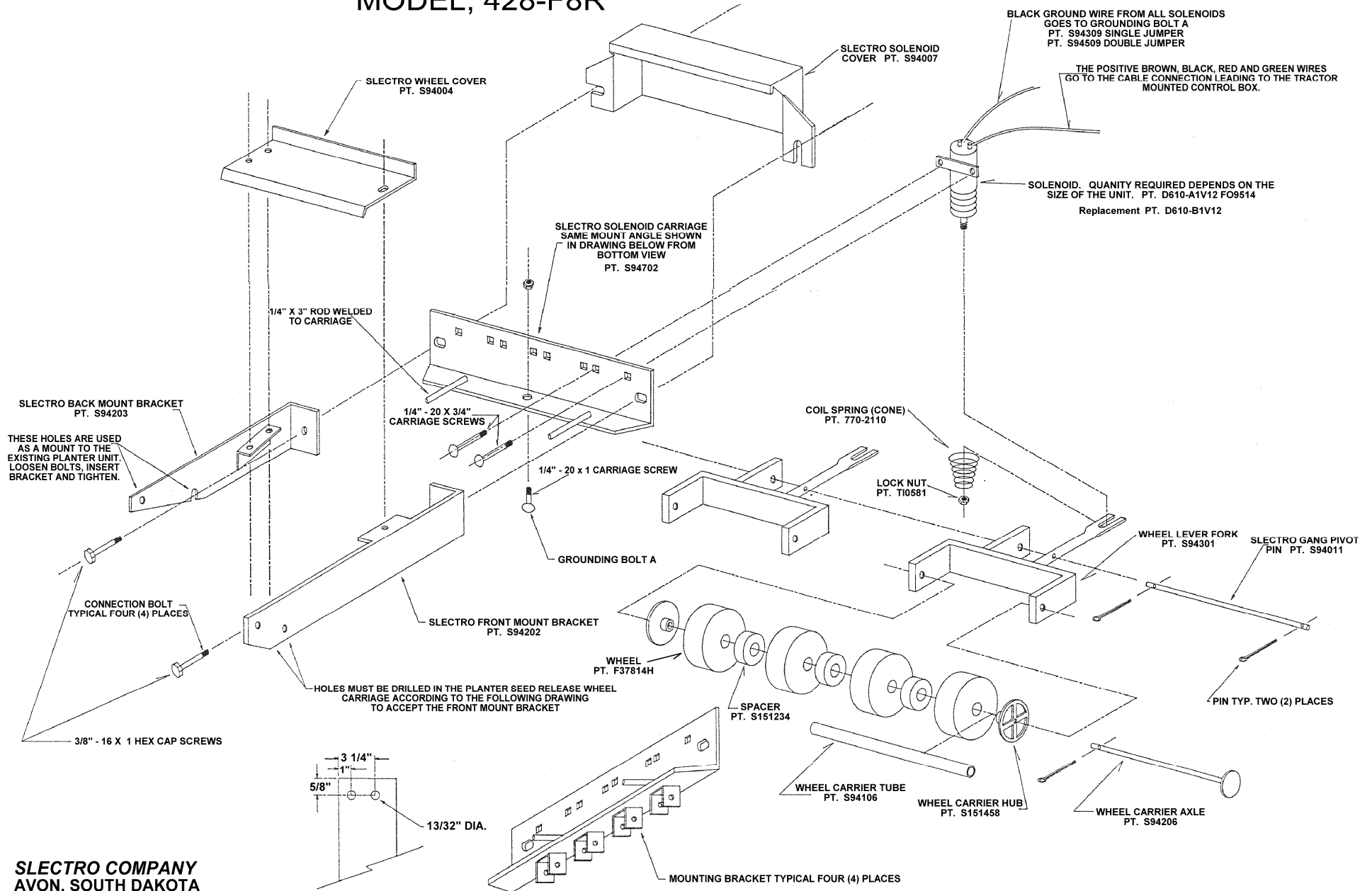


SLECTRO COMPANY
 AVON, SOUTH DAKOTA
 (605) 286-3221

Part drawing - not to scale

ROW SHUT OFF CARRIAGE UNIT

MODEL; 428-F8R

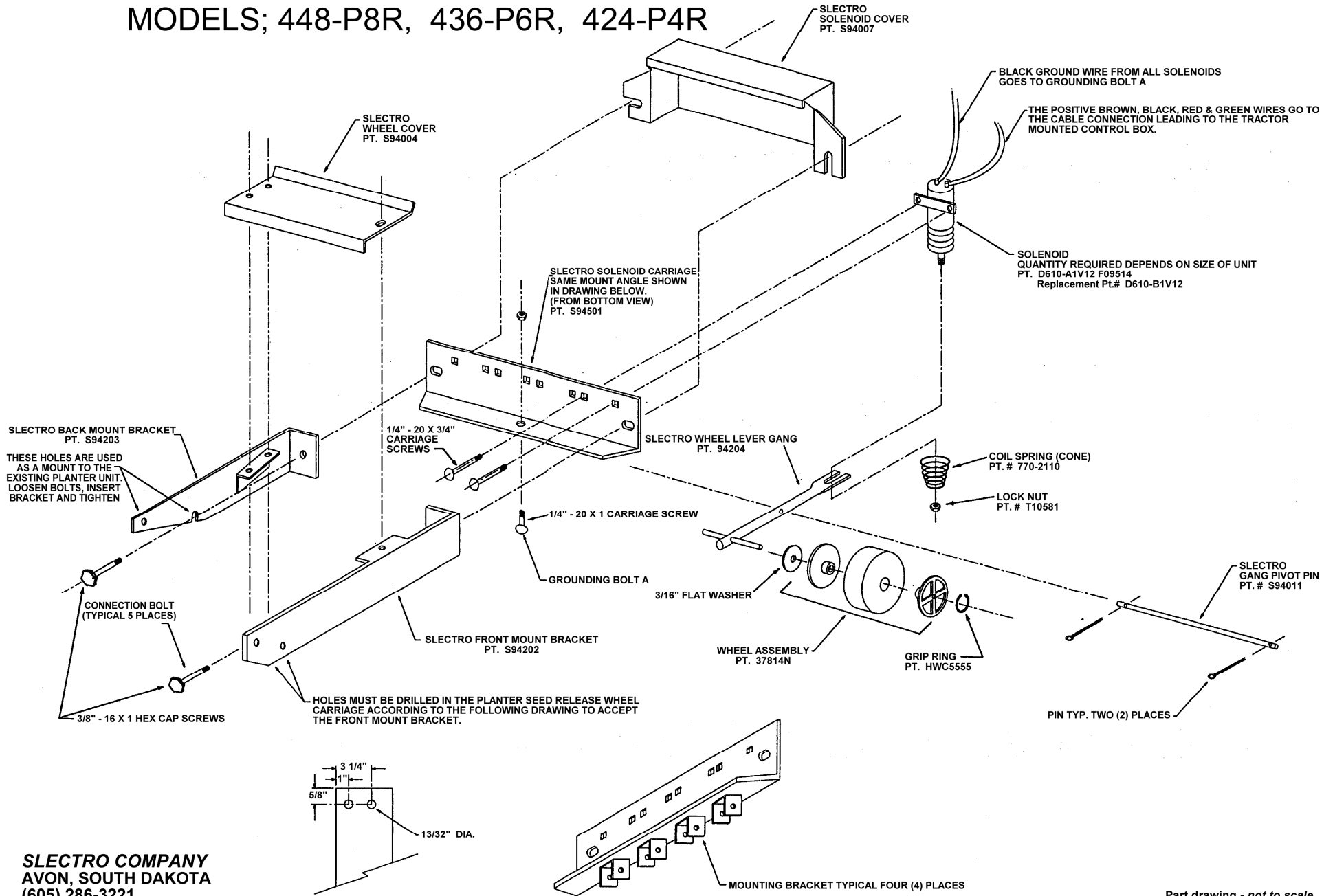


SLECTRO COMPANY
AVON, SOUTH DAKOTA
(605) 286-3221

Part drawing - not to scale

ROW SHUT OFF CARRIAGE UNIT

MODELS; 448-P8R, 436-P6R, 424-P4R

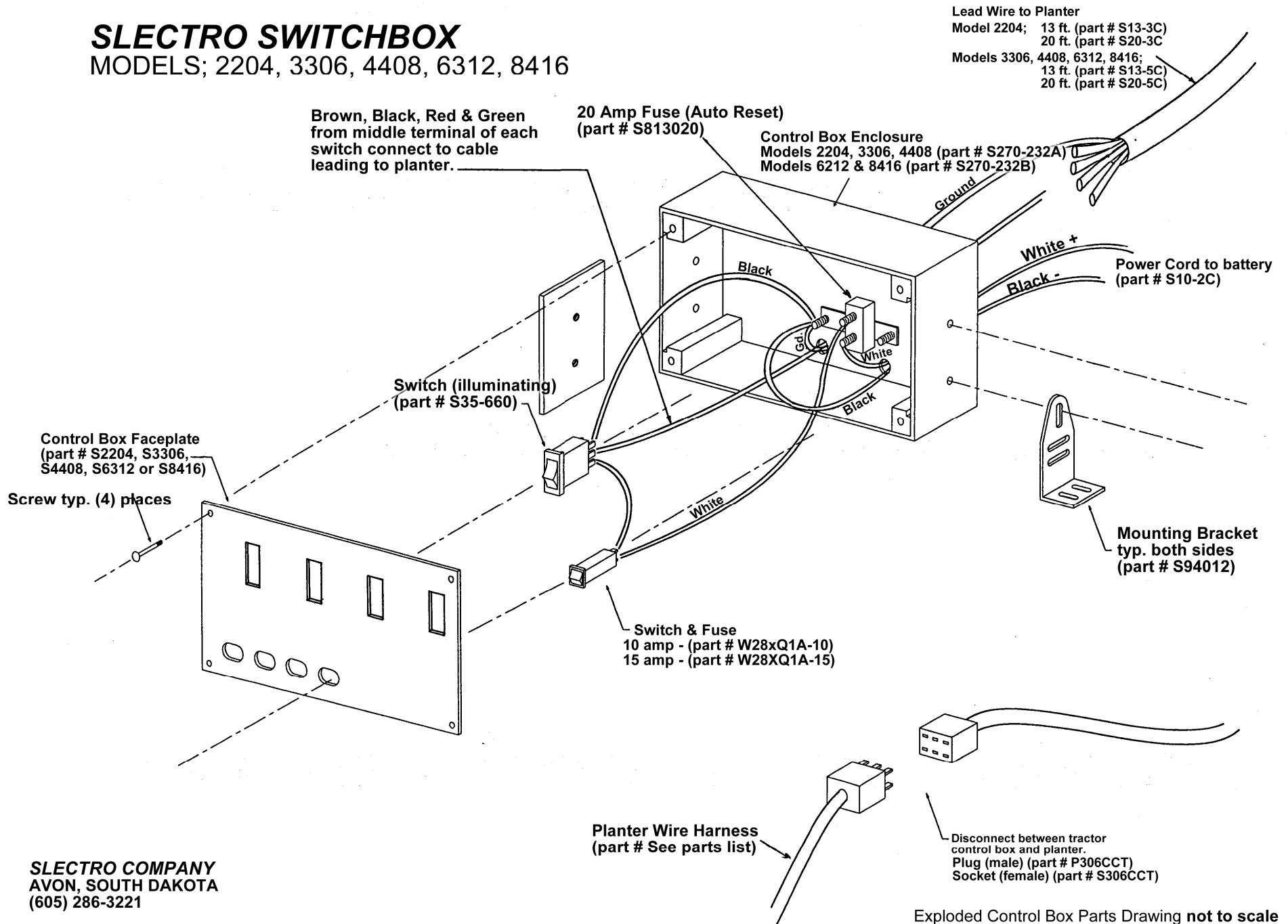


SLECTRO COMPANY
 AVON, SOUTH DAKOTA
 (605) 286-3221

Part drawing - not to scale

SLECTRO SWITCHBOX

MODELS; 2204, 3306, 4408, 6312, 8416



SLECTRO COMPANY
 AVON, SOUTH DAKOTA
 (605) 286-3221

Exploded Control Box Parts Drawing not to scale